



5 Upper Gore Lane Gore Lane
Eastry, Sandwich, CT13 0LH
£1,200 Per Calendar Month



5 Upper Gore Lane Gore Lane, Eastry, Sandwich, CT13 0LH

A newly refurbished three bedroom semi-detached family home in Eastry. The landlord has renovated the property including a full redecoration throughout, new carpets and a brand new kitchen. The internal accommodation comprises entrance hall, spacious living room, a kitchen/dining room occupies the rear of the ground floor. To the first floor you will find three bedrooms and a family bathroom.

Externally the property is accessed via steps from the roadside and boasts front, side and rear gardens which are mainly laid to lawn. There is also a most useful brick built outbuilding.

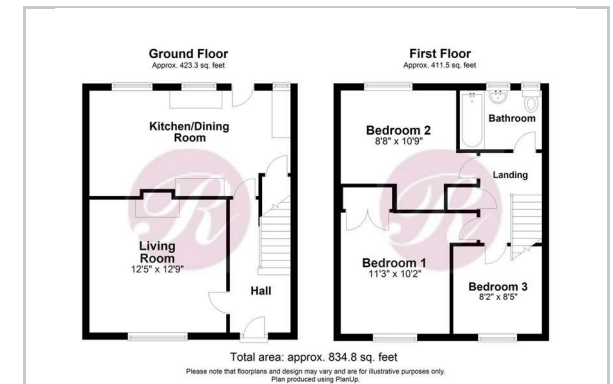
Note: Unfurnished. 12 Months. Council Tax Band C.



Area Map



Floor Plan



Energy Efficiency Graph

Energy Efficiency Rating		Current	Potential
Very energy efficient - lower running costs			
(92 plus)	A		
(81-91)	B		
(69-80)	C		
(55-68)	D		
(39-54)	E		
(21-38)	F		
(1-20)	G		
Not energy efficient - higher running costs			
England & Wales		EU Directive 2002/91/EC	

These particulars, whilst believed to be accurate are set out as a general outline only for guidance and do not constitute any part of an offer or contract. Intending purchasers should not rely on them as statements of representation of fact, but must satisfy themselves by inspection or otherwise as to their accuracy. No person in this firm's employment has the authority to make or give any representation or warranty in respect of the property.